

RoHS Testing: - TIPL will bear the cost and would completely support the RoHS testing Procedure carried out by CPCB. (if any)

RoHS Technical Documents Declaration: TIPL will submit the technical documentation as per availability with TIPL.

Agreement with Dealers: TIPL is no longer engaged in sales of HA & TV since March 2014 and December 2015 respectively. There is no dealer network accordingly. Hence, not applicable.

Whether all states are covered?

Only 19 states are covered. What about other states?

TIPL call centre number (0120 3870700) is mentioned on our website. TIPL call centre will arrange pick-up the e-waste from any part of India.

E-Waste in the form of defective spare parts is generated at service centre and repair vendors from where the same is collected and channelised properly by TES-AMM.

Awareness Plan

Details of publications, advertisements, posters, number of workshops, training programme, type of audience etc.

TIPL did awareness activities of e-waste by mentioning about e-waste and RoHS compliant status in the advertisement through newspapers/pamphlets. Further, due to change in business model, TIPL is not doing any advertisements/ workshops. Training programmes. TIPL has ceased, from sale of TV & HA, awareness for customers would be done through SMS & Email about TIPL take back plan.

Any Other Scheme

TIPL is no longer engaged in the sales of HA and TV since March 2014 and Dec 2015 respectively. Since there is no sales activity, there are no buyback schemes/exchange schemes /DRS etc.

Website information

Details of e-waste mechanism is mentioned on the website. For more details pl refer:

<https://www.toshibe-india.com/e-waste-management.aspx>

Estimated Budget for EPR- Producer shall give proposed financial allocation on following:

Awareness

BUDGET: INR 2,00,000/- (Two Lakhs INR) for sending bulk SMSs & Emails.

Specific collection Schemes

TIPL is no longer engaged in the Sales of HA and TV since March 2014 and Dec 2015 respectively. Since there is no sales activity it is not possible to run any buyback scheme. Exchange schemes/DRS etc.

Collection centres

Budget: INR 8,00,000/- (Eight lacs INR)

RoHS Testing

TIPL will bear the cost and would completely support the RoHS testing Procedure carried out by CPCB. (if any)

Details of proposed awareness program- required budgetary allocation

- i) Announcement of take back scheme on TIPL official website: TIPL provides an easy and environment friendly way to its customers to dispose-off Toshiba branded television, refrigerator and washing machine that have reached their end-of life. The end of life instructions for customers duly display on website including the end –of-life period of products, helpline contact details and do's
- ii) E Mails & SMS to existing customer database on a quarterly basis.

BUDGET: INR 2, 00, 000/- (Two Lakhs INR)

ANNEXURE – A

TIPL TAKE BACK PLAN

TIPL is committed to the "E-Waste (Management) Rules 2016" for collection, disposal or recycling e-waste generated from end-of- life Toshiba products.

TIPL provides an easy and environment-friendly way to its customers to dispose-off Toshiba branded television, refrigerator and washing machine that have reached their end-of- life. This service is provided free of cost to the customers. TIPL has appointed M/s TES-AMM India Private Limited as its authorized recycler for recycling of Toshiba branded products that have reached their end-of- life.

The 'end-of- life' period (average life) of Toshiba products covered by this document is mentioned below:

Products	Average Life
Television sets (including sets based on Liquid Crystal Display and Light Emitting Diode technology)	9 Years
Refrigerator	10 Years
Washing Machine	9 Years

Collection Centre/ Collection Point/ Recycler:

You can deposit your end-of-life Toshiba products at any of Toshiba's collection centres/ collection points/ authorised recycler in India. Click [HERE](#) to know the contact details of Toshiba's collection centres/ collection points/ authorised recycler.

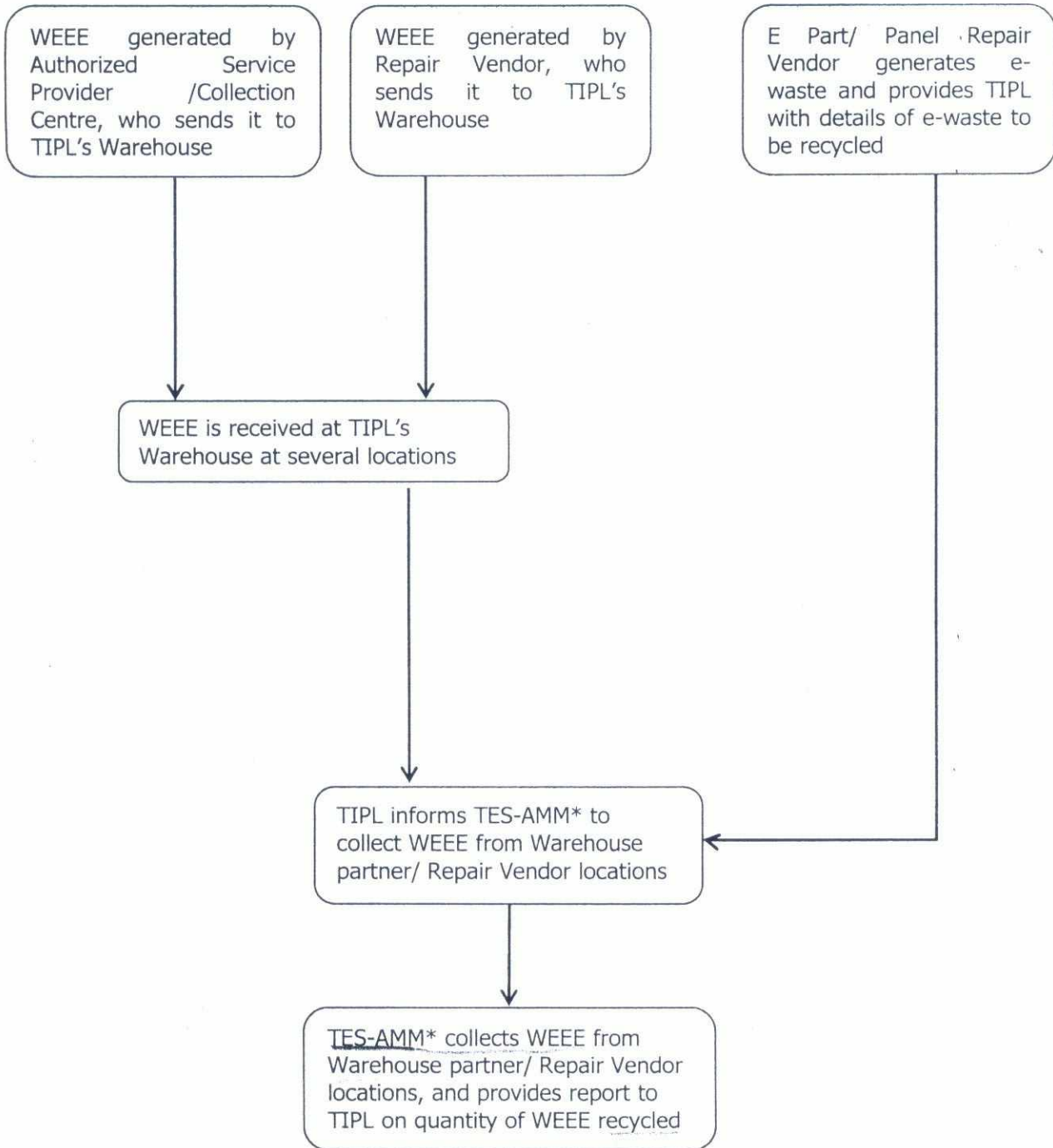
How to Recycle

- Please call TIPL Call Centre at 0120-3870700 ✓
- Inform them of your intent to recycle your end-of-life Toshiba product.
- TIPL Call Centre will arrange a pick-up of your end-of-life Toshiba product from your location.
- The end-of-life Toshiba product you intend to recycle can also be directly delivered at any of TIPL's collection centres/ collection points/ authorised recycler (refer to above link).

DON'TS

- Do not open/ repair the end-of-life Toshiba product.
- Do not sell the end-of-life Toshiba product to any unauthorized agency/ scrap dealers.
- Do not mix/ dispose the end-of-life Toshiba product with other household waste.
- Do not dispose the end-of-life Toshiba product in municipal waste bins.
- Do not keep the end-of-life Toshiba product exposed in open.

FLOW CHART FOR E-WASTE RECYCLE



* **TES-AMM is authorized recycler**

6. Extended Producer Responsibility Plans:

(a) Please provide details of your overall scheme to fulfill Extended Producer Responsibility obligations including targets. This should comprise of general scheme of collection of used/waste Electrical and Electronic Equipment from the Electrical and Electronic Equipment placed on the market earlier such as through dealers and collection centers, Producer Responsibility Organisation, through buy-back arrangement, exchange scheme, Deposit Refund Scheme, etc. whether directly or through any authorized agency and channelizing the items so collected to authorized recyclers.

Overview of Extended Producer Responsibility Plan:

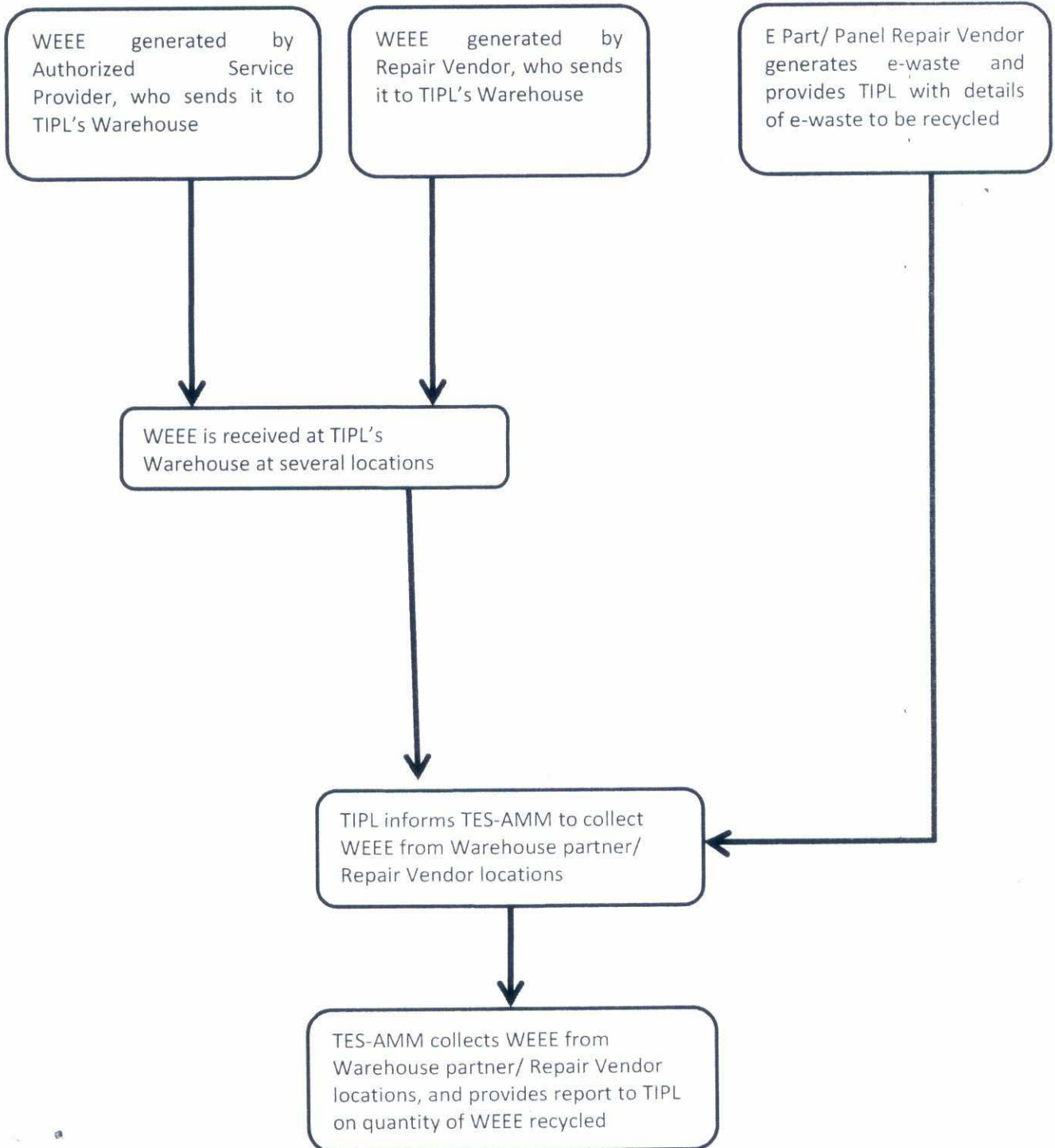
Toshiba India Private Limited ("TIPL") is providing after sales service for TVs, Washing Machines and Refrigerators ("EEE") in Indian market. TIPL is currently placing limited quantity of EEE in the form of spare parts of EEE to meet it's after sales service obligations towards its end customers.

In case of any defects in the EEE, customer approaches Authorized Service Centers ("ASCs") of TIPL located across India, which are operated and maintained by Authorized Service Partners of TIPL. WEEE is generated in the form of defective parts at the ASCs which are ultimately sent for recycling at the facility of TES-AMM (India) Pvt., an authorized recycler having its recycling facilities at Chennai ("TES-AMM"). TIPL has appointed an authorized recycler TES-AMM India Private Limited for disassembly, scrap processing and recycling of WEEE for asset recovery. As per the agreement, TES-AMM shall collect the WEEE through its logistics forwarder from customer's address or TIPL's Collection Center as may be notified to TES-AMM from time to time.

Further, TIPL has also engaged a few repair vendors for repair of spare parts such as LCD screen, motherboards etc. These repair vendors are another source of WEEE generated in the form of defective spare parts which are sent to TIPL's authorized recycler TES-AMM and ultimately recycled at its above mentioned facility.

The spare parts are stored at warehouses located across India to cater supply requirements of spare parts to ASCs. It is pertinent to note that these warehouses are also being used by TIPL as collection centers for WEEE generated in the form of defective spare parts of EEE repaired at these ASCs. TIPL has 20 Collection Centers located in 19 States.

FLOW CHART FOR E-WASTE RECYCLE



7/8

Year wise target of WEEE Management has been provided in the Table 2 above.

(b) Provide the list with addressed along with agreement copies with dealers, collection centers, recyclers, Treatment, Storage and Disposal Facility, etc. under your scheme.

TIPL has discontinued all its business operations i.e. sales and after sales service of Toshiba laptops after September 2016. Further the sale of Home Appliances (refrigerators and washing machines) and Televisions were stopped after March 2014 and December 2015 respectively. At present TIPL is providing after sales services for Televisions and Home Appliances through its authorized service partners and repair vendors. Spare parts are being stored in warehouses which also works as collection centers at various locations across the country. WEEE generated at the ASPs and repair vendors are being recycled at TES-AMM, an authorized recycler of WEEE having its facility at Chennai.

Copies of warehouse agreement with Ensure Support Services India Limited and WEEE recycling agreement with TES-AMM India Private Limited are part and parcel of the EPR Plan annexed as **ANNEXURE B 2** and **ANNEXURE B 3** respectively.

7. Estimated budget for Extended Producer Responsibility and allied initiatives to create consumer awareness.

EPR Budget:

Infrastructure cost on Collection Centers: Rs. 8,00,000/- (Rupees Eight Lakhs only) /per year

Expenses on customer awareness: Rs. 2,00,000/- (Rupees Two Lakhs only)/per year

Logistics charges: Rs. 2,00,000/- (Two Lakhs only)/per year for reverse logistics

Total budget for EPR management: 12,00,000/- (Rupees Twelve Lakhs only)

8. Details of proposed awareness programs.

i) Announcement of take back scheme on TIPL official website: TIPL provides an easy and environment-friendly way to its customers to dispose-off Toshiba branded television, refrigerator and washing machine that have reached their end-of-life. The end of life instructions for customers duly displayed on website including the 'end-of-life' period of products, helpline contact details and do's and don'ts for customers.

ii) Emails & SMS to existing customer database on a quarterly basis.

9. Details for Reduction of Hazardous Substances compliance (to be filled if applicable):

(a) Whether the Electrical and Electronic Equipment placed on market complies with the rule 16 (1) limits with respect to lead, mercury, cadmium, hexavalent chromium, polybrominated biphenyls and polybrominated diphenyl ethers;

ROHS Declaration of TIPL and Suppliers/repair vendors are annexed as **ANNEXURE D**.